



90 Day & 30 Day Memberships

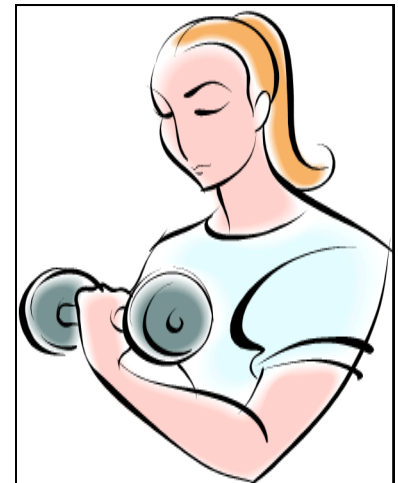


Get a head start on a healthy lifestyle with one of our 90 day or 30 Day memberships.

Whether it's a workout in the fitness center, or a swim in the pool, we've got something to make you feel great. In addition, you'll receive Member rates for classes.

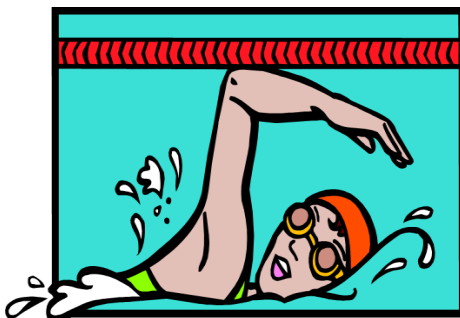
90 Day Membership Rates

Resident Adult	\$ 100
Resident Family	\$ 165
Non-Resident Adult	\$ 150
Non-Resident Family	\$ 220



30 Day Membership Rates

Resident Adult	\$ 75
Non-Resident Adult	\$ 95



90 day and 30 day memberships can be upgraded to an annual membership, but **CANNOT** be upgraded to an **Electronic Funds Transfer** type of membership. Upgraded memberships will expire 380 days from the start of the 90 or 30 day membership.

Joseph H. Emminger, Supervisor
Town of Tonawanda

Dan Crangle, Councilman
Chairman, Youth, Parks & Recreation Committee

Jeffrey P. Ehlers, Director
Youth, Parks & Recreation Department